

Term 4 Newsletter 2018 – 2019



Message from Michelle Reysenn – Headteacher

Dear all,

I cannot believe it is already the end of term 4. We will soon be back to start the summer term with lighter evenings and warmer weather.

I think it is only right for me to comment on our recent Ofsted inspection of our residential provision. Two inspectors spent three days at the school at the beginning of term 4, meeting with leaders, staff, pupils, and talking to families, professionals, and academy councillors.

Notton House Academy was judged as Good in all areas.

This is a superb achievement for the school and I must thank all pupils, staff, families, our partner schools and colleagues within Learn@ MAT, our neighbours, our academy councillors, and our visiting professionals. We are so grateful for everyone's support and hard work in making Notton such a great school.

I have included some extracts from the report below. The full report can be found on the Ofsted website.

- Leaders, managers and staff know the young people very well and the residential provision fully complements the education component of the school.
- Staff have high aspirations for the young people and have created a structured and supportive environment, all of which impacts positively on the young people's outcomes
- A well-structured leadership team drives change and advocates for developments extremely well. Examples of this include the refurbished bedrooms and communal areas.
- Young people are looked after by a stable, well-trained staff team. As a result, they make steady progress in all areas and form trusting and loving relationships.
- Young people are kept safe and this is due to many factors, for example knowing there are staff they can talk to and knowing that the building is safe.
- Parents and social workers also told inspectors that they feel confident that young people are safe.

Inspectors were impressed with the changes that have occurred across the site over the past 12 months, some of which include: our primary sensory room, the stunning fitness suite, the beginning of a home-made sensory garden, a new ICT suite, a well-equipped music and performance space, a welcoming and calming nurture base, our amazing E Sports gaming suite, freshly painted and decorated lounges and bedrooms, with new furniture and lots of homely soft furnishings, and our soon to be completed American themed diner... the list goes on. Staff and pupils have been central to these changes and everyone has been consulted about how to move Notton forward on its journey to Outstanding. Effective relationships are at the heart of what we do... by building trust and resilience, making long lasting friendships, creating a safe place for all, and encouraging all pupils to feel a sense of success and to achieve.

Please enjoy reading our newsletter, and once again, thank you all. Happy Easter!



Oak Class

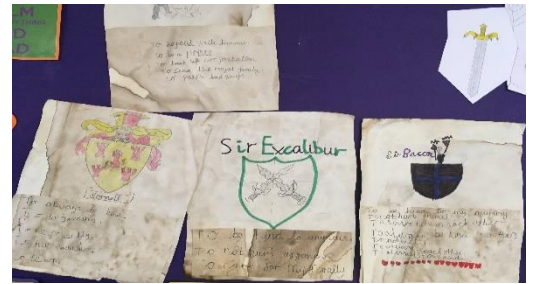
The boys in Oak class enjoyed a sunny day at Weston Super Mare for their outdoor learning earlier in the term. Staff had a great time too!





Primary - Maple Class

In Literacy this term, the boys have designed their own knight's coat of arms and oaths. They were drawn and written on paper cooked in the oven, making it look like parchment. The results were very satisfying. Some of the boys also represented a book or comic in a shoe box for World Book Day,

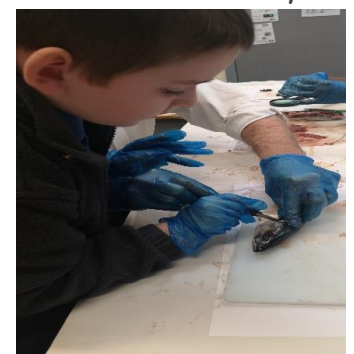
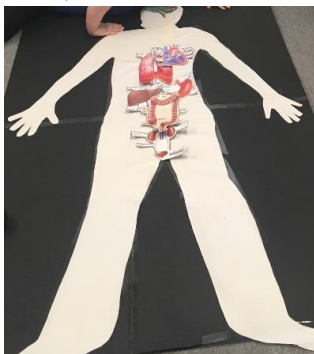


and we all dressed up as some of our favourite characters. Nathan, our Learning Facilitator, was a good sport and allowed himself to be egged and muddled on the field in order to become a dirtier Mr Stink!



In Maths, we have been studying percentages % as well as consolidating our knowledge of measurements lb, fractions $\frac{1}{4}$ and the four operations $+$ $-$ \times \div . The boys have applied their knowledge in the Chippenham sweet shop; they also helped Karen (the owner) to weigh their chosen sweets using the scales. They were so polite that she gave them all a free drink!

In Science, we have created 'Senior' (our life-sized figure - we drew around one of the boys!) to help everyone locate the organs of the body. They also helped our Head of Science, Paul, to dissect a fish. Everyone was very responsible and learned a great deal about anatomy.



Term 4 for year 7/8 class with Helen and Tom

The weather has been a bit up and down for us so we have made the most of continuing to explore wild places when we could, but when the weather has been too poor, we have enjoyed ice skating/trampolining and skate parks, hope you like our pictures!

Even though we have had lots of fun, we still have done some amazing learning this term in Numeracy and Literacy. Our focus for literacy has been learning to use punctuation correctly, identifying features of newspapers and extending to write our own articles.

In numeracy, we have learned to calculate perimeter, area and finding fractions of quantities.

In science, we have been learning about germination and students have grown their own sunflowers and vegetables. We have also taken a keen interest in cell and microscope work.



A section of extended writing by Kieran M Y11

The 256 wall English mock

It was a standardly boring Monday at Notton House Academy, Kieran knew he had a hard English lesson ahead of him but he had no idea how hard. The bell at the end of lunch sounded annoyingly and Kieran headed to Dobby's classroom ready for the ruthless onslaught that was his cruel teaching methods. Kieran paused at the door, contemplating on whether he should just skip class or not.

"No," he thought to himself, "you need to go to class, the rewards trip is coming up, and you'll just have to deal with whatever Dobby has set out for you." Kieran knocked on the door depressingly, awaiting the sweet release of care time. An old withering house elf stepped up to the door and pushed the button to open it. The door swung open and the house elf parted his lips to greet Kieran but before he could say anything he was met by, "Shut up Dobby, my weekend was terrible." Kieran often did this, no one truly knew why, he just did, I'm not even sure if HE knew why he did it.

The almost lifeless husk of the child sauntered into the classroom almost floating across the floor. He shuffled himself into the corner of the room and climbed up onto the desk. After about 5 minutes Becky arrived, she strut her way into the class like she owned the place, as is usual for Becky. By this point Kieran had curled up on the desk with no hope of actually doing his work. Dobby started, almost crawling over to do his usual act of trying to get Kieran to work. "You need to do your work in order to get yo--"

Coffee Morning 12.03.19

Notton House and KDGE have met up again for another joint coffee Morning where Annie and Sally from **SPAN** came in for their second visit.

This time they covered **Attachment and children's Emotional wellbeing.**

Empire Gym popped in to talk about their provision during the school holidays; they are going to be offering parents family BOX FIT and days out for the families. Please contact Suzie or Tracy if you would like further information

The coffee morning re-gifting Raffle, raised £10.00 for Notton House Academy outdoor seating.

For our next coffee morning, **SPAN** group is penciled in for Tuesday 30th April 2019, at KDGE 11-1pm. Everyone welcome.



Art and Food Tech Term 4

This term we are looking forward to spring and will be doing some outdoor photography spotting some spring nature; there is the lovely cherry blossom tree in bloom at the front of the main building and lots of flowers popping up in the field and gardens. The photographs and natural materials found (flowers, feathers, wool etc.) will be used in monoprinting.

All years have been looking at Celtic Art, from making collages in lower school to designing a Celtic initial in the style of an Illuminated manuscript to making drawings from the Gundestrup cup and Battersea shield. Some classes have coloured their letter drawings and some have made some Celtic Art inspired batik.

In Food technology this term, lower and middle school have made French bread pizza, Omelette, Savoury flatbreads and Savoury rice in addition to Pancakes on Pancake Day. Upper school and BTEC have also made a fabulous Paella and Spaghetti Bolognese in addition to some delicious cheese scones.



NOTTON HOUSE ESPORTS



Team	Played	Won	Lost	Drawn	For	Against	Diff	Streak	Points
The-Green-Room	7	7	0	0	21	3	18	7	21
Haybrook College Post 16	7	6	1	0	19	5	14	3	18
Haybrook-College-Millside 1	7	5	2	0	15	8	7	0	15
Notton-House-School 1	7	4	3	0	13	10	3	0	12
Glebe-School 1	7	2	5	0	9	12	-3	1	6
Orchard-Hill-College 1	7	2	5	0	8	12	-4	1	6
The Nightingales	7	1	6	0	4	19	-15	0	3
Sheffield Inclusion Centre	7	0	7	0	1	21	-20	0	0

We played The Green Room in our final match and lost it 1 game to 3. The Green Room had only conceded 2 individual games in the entire tournament, so the boys did really well to secure the single win. Eventually we were simply outplayed by a team who had a wider range of skills and knowledge of the game. The final league table shows our fourth position finish having won 4 of our 7 fixtures. The boys at Notton House are already talking about the next opportunity to represent the Academy in Esports. At this stage, we are confident there will be another tournament, but do not know what format the tournament will be and what game titles will be available. What we do know is that Notton House wants to continue to compete at Esports.



I really hope this tournament marks the beginning of a new era of inter-school competition for Notton House and hope to see many more boys representing the school in the future and wearing their British Esports school jersey with pride.

Changes and Development

So many changes and developments have taken place across the site since Term 3, so take a look at a few of the exciting pictures below.

Our Learning Mentor Room has now become a calm and quiet pastoral support room where boys can take time out of their day when required. Our mentoring now takes place in our beautiful nurture base with Emma and Suzie.



Our Library has also had a bit of a makeover so it is more welcoming and relaxing.



We also have a bright, clean, calm Time Out room where our pastoral staff are based in the day. Our Emotional Literacy sessions also take place in here.

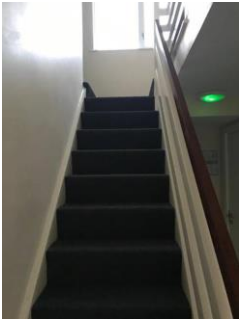


The outdoor gym has been relocated. Three pieces are situated in the primary playground, and the other five are now on the main field.

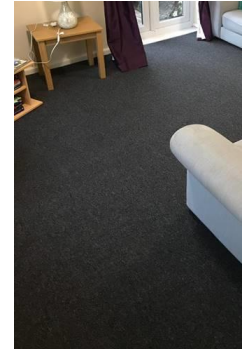


The **Dining Room** has had a makeover with bright and fresh paintwork. The aim is to create an American diner. Stage 1 of 3 is complete. Stage 2 is the floor and stage 3 the artwork.

The student council designed this and we cannot wait to see the finished product!



New carpets have been fitted in **Fox Talbot** house.



Ollie the spray painter has been in to create some stunning wall art in the education block. One outside the library of mystical and magical books: **Star Wars Vs Lord of the Rings!**



The other one is located in the KS4 corridor and very near to the E Sports room. It is a Batman car from the game **Rocket League**.

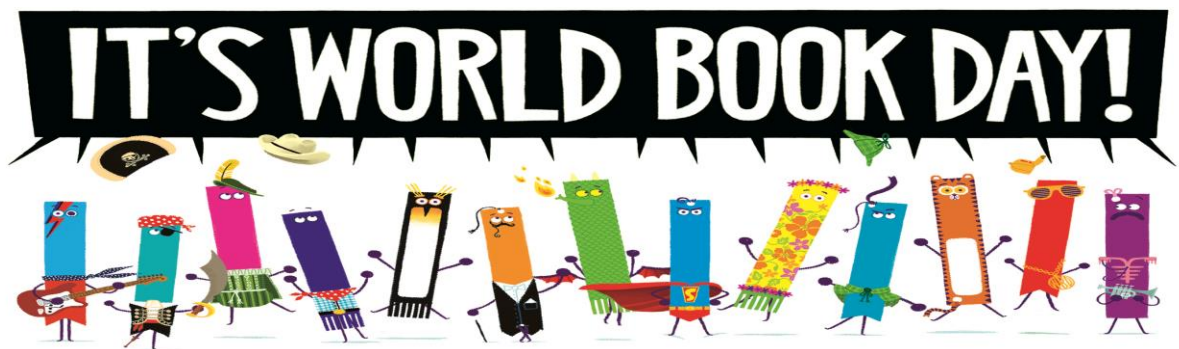
Plus, the science room has been painted, as have the corridors upstairs in Courtyard.



Our **Prize Cabinet** for our weekly winners has been restocked and the boys love coming to choose a prize on a Friday – one for our overall pupil of the week, and a prize for the overall green token winner!

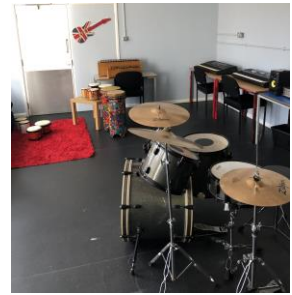
Donations

At Notton House, we have been so lucky to receive so many wonderful donations. The pool table that doubles up as a table football was given to us from a family nearby. The boys have loved using it.



New Music Room

We have an amazing music room! Pupils are loving to come into our new music room and explore the different instruments available. Many have been donated, including the piano!



Sensory Garden

Look at the work that has taken place in the new sensory garden! All items have been donated and many have been made by the staff and pupils. We will continue to add to this over the next two terms until it is the best sensory garden in Wiltshire!



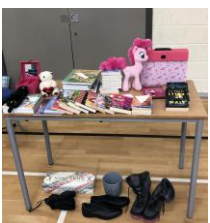
New Bikes!

We have new bikes! Boys are thrilled to have new push bikes for the warmer weather and summer terms. Notton House is situated in beautiful grounds and surrounded by lovely countryside. It's time to enjoy the outdoors just a little bit more!



Table Top Sale

Thank you to all who came to support our first table top sale. We raised £100 which will go towards outdoor seating for the boys. We will continue with more fundraising events each term.



This Term's Subject Winners

ENGLISH

ART



English – Reagen

Maths – Ellis

Science – Brandon

GCSE Physics – Kieran M

Art – Matty

Food – Kieran M

GCSE PE – Reagen

Outdoor Education – Ruben

Land Based Studies – Lee G

Motor Vehicles – Jason

Primary 1 – Tom P

Primary 2 – Matty

Middle School – Ruben

Literacy Intervention – Junior

Bookworm Award – Rio

Maths

food tech



This Term's Green Token Winners

Matty

Connor

Brandon

Ruben

Junior

This Term's Top Point Scorers

Kieran M

Dylan

Ben H

Haruun

Cody

This Term's Attendance Winners

100%

Bennito

Ruben

Ben

Brandon

Kieran M

Haruun

Cayden

Matty

Tom

Nathan

Jason

Junior



Over 95%

Rio

Kaydon

Jack S

Connor



Dates to remember

Monday 23rd April – Curriculum Review Day

Tuesday 24th April – Start of Term 5

Annual Reviews will be taking place for Y9's and Y10's in Term 5

Monday 6th May – Bank Holiday

Friday 24th May – End of Term 5

Monday 3rd June – Start of Term 6



Easy Fundraising

We've registered with easyfundraising and we need your help!

easyfundraising is a great website where you can help Learn@ MAT raise funds simply by doing your everyday online shopping with over 3,300 big name retailers like Amazon, Argos, John Lewis, ASOS, Booking.com, eBay, Boden, and M&S.

Every time you shop, we receive a small donation to say 'thank you' and it's completely free too! We want raise as much as possible so please sign up and help us at <https://www.easyfundraising.org.uk/causes/learnmat/>



Raise free donations for us every time you shop online with easyfundraising!



<https://www.easyfundraising.org.uk/causes/learnmat/>

Red Nose Day 2019! Raising Money for Comic Relief!



Please can I remind all families of the uniform policy:-



Uniform:

School Uniform

A compulsory Notton House polo shirt (Royal Blue)

A compulsory Notton House sweatshirt (no hood) or grey fleece

Black or Grey Trousers (No tracksuit bottoms allowed except for P.E. lessons)

Black Shoes (no other colours permitted)



P.E. Kit

Students are permitted to wear their own PE kit but this must not include items with large logos.

Trainers (no black soles are permitted for indoor P.E. lessons)

Trousers can be purchased from supermarkets such as ASDA or Tesco.

School polo shirts, sweatshirts and fleeces are available for purchase directly from school. All the garments offer excellent value for money and are made from hard wearing, machine washable fabrics, embroidered with our logo.

Price List

Item	Size	Cost
Polo Shirt	9/10, 11/12	£6.50
Polo Shirt	S/M/L	£8.50
Sweatshirt	12/13	£7.00
Sweatshirt	S/M/L/XL	£8.50
Fleece	Youth L/XL	£11.00
Fleece	S/M/L/XL	£13.70

ACADEMIC CALENDAR 2018-2019



School Holiday



Bank Holiday



Pupil Day



Inset Day



Pupil Inductions/Annual

September 2018						
Mon		3	10	17	24	
Tue		4	11	18	25	
Wed		5	12	19	26	
Thu		6	13	20	27	
Fri		7	14	21	28	
Sat	1	8	15	22	29	
Sun	2	9	16	23	30	

October 2018						
Mon	1	8	15	22	29	
Tue	2	9	16	23	30	
Wed	3	10	17	24	31	
Thu	4	11	18	25		
Fri	5	12	19	26		
Sat	6	13	20	27		
Sun	7	14	21	28		

November 2018						
Mon		5	12	19	26	
Tue		6	13	20	27	
Wed		7	14	21	28	
Thu	1	8	15	22	29	
Fri	2	9	16	23	30	
Sat	3	10	17	24		
Sun	4	11	18	25		

December 2018						
Mon		3	10	17	24	31
Tue		4	11	18	25	
Wed		5	12	19	26	
Thu		6	13	20	27	
Fri		7	14	21	28	
Sat	1	8	15	22	29	
Sun	2	9	16	23	30	

January 2019						
Mon		7	14	21	28	
Tue	1	8	15	22	29	
Wed	2	9	16	23	30	
Thu	3	10	17	24	31	
Fri	4	11	18	25		
Sat	5	12	19	26		
Sun	6	13	20	27		

February 2019						
Mon		4	11	18	25	
Tue		5	12	19	26	
Wed		6	13	20	27	
Thu		7	14	21	28	
Fri	1	8	15	22		
Sat	2	9	16	23		
Sun	3	10	17	24		

March 2019						
Mon		4	11	18	25	
Tue		5	12	19	26	
Wed		6	13	20	27	
Thu		7	14	21	28	
Fri	1	8	15	22	29	
Sat	2	9	16	23	30	
Sun	3	10	17	24	31	

April 2019						
Mon	1	8	15	22	29	
Tue	2	9	16	23	30	
Wed	3	10	17	24		
Thu	4	11	18	25		
Fri	5	12	19	26		
Sat	6	13	20	27		
Sun	7	14	21	28		

May 2019						
Mon		6	13	20	27	
Tue		7	14	21	28	
Wed	1	8	15	22	29	
Thu	2	9	16	23	30	
Fri	3	10	17	24	31	
Sat	4	11	18	25		
Sun	5	12	19	26		

June 2019						
Mon		3	10	17	24	
Tue		4	11	18	25	
Wed		5	12	19	26	
Thu		6	13	20	27	
Fri		7	14	21	28	
Sat	1	8	15	22	29	
Sun	2	9	16	23	30	

July 2019						
Mon	1	8	15	22	29	
Tue	2	9	16	23	30	
Wed	3	10	17	24	31	
Thu	4	11	18	25		
Fri	5	12	19	26		
Sat	6	13	20	27		
Sun	7	14	21	28		

August/September 2019						
Mon		5	12	19	26	
Tue		6	13	20	27	
Wed		7	14	21	28	
Thu	1	8	15	22	29	
Fri	2	9	16	23	30	
Sat	3	10	17	24	31	
Sun	4	11	18	25		

ACADEMIC CALENDAR 2019-2020



School Holiday



Bank Holiday



Pupil Day



Inset Day



Pupil Inductions/Annual

September 2019						
Mon		2	9	16	23	30
Tue		3	10	17	24	
Wed		4	11	18	25	
Thu		5	12	19	26	
Fri		6	13	20	27	
Sat		7	14	21	28	
Sun	1	8	15	22	29	

October 2019						
Mon		7	14	21	28	
Tue	1	8	15	22	29	
Wed	2	9	16	23	30	
Thu	3	10	17	24	31	
Fri	4	11	18	25		
Sat	5	12	19	26		
Sun	6	13	20	27		

November 2019						
Mon		4	11	18	25	
Tue		5	12	19	26	
Wed		6	13	20	27	
Thu		7	14	21	28	
Fri	1	8	15	22	29	
Sat	2	9	16	23	30	
Sun	3	10	17	24		

December 2019						
Mon		2	9	16	23	30
Tue		3	10	17	24	31
Wed		4	11	18	25	
Thu		5	12	19	26	
Fri		6	13	20	27	
Sat		7	14	21	28	
Sun	1	8	15	22	29	

January 2020						
Mon		6	13	20	27	
Tue		7	14	21	28	
Wed	1	8	15	22	29	
Thu	2	9	16	23	30	
Fri	3	10	17	24	31	
Sat	4	11	18	25		
Sun	5	12	19	26		

February 2020						
Mon		3	10	17	24	
Tue		4	11	18	25	
Wed		5	12	19	26	
Thu		6	13	20	27	
Fri		7	14	21	28	
Sat	1	8	15	22	29	
Sun	2	9	16	23		

March 2020						
Mon		2	9	16	23	30
Tue		3	10	17	24	31
Wed		4	11	18	25	
Thu		5	12	19	26	
Fri		6	13	20	27	
Sat		7	14	21	28	
Sun	1	8	15	22	29	

April 2020						
Mon		6	13	20	27	
Tue		7	14	21	28	
Wed	1	8	15	22	29	
Thu	2	9	16	23	30	
Fri	3	10	17	24		
Sat	4	11	18	25		
Sun	5	12	19	26		

May 2020						
Mon		4	11	18	25	
Tue		5	12	19	26	
Wed		6	13	20	27	
Thu		7	14	21	28	
Fri	1	8	15	22	29	
Sat	2	9	16	23	30	
Sun	3	10	17	24	31	

June 2020						
Mon	1	8	15	22	29	
Tue	2	9	16	23	30	
Wed	3	10	17	24		
Thu	4	11	18	25		
Fri	5	12	19	26		
Sat	6	13	20	27		
Sun	7	14	21	28		

July 2020						
Mon		6	13	20	27	
Tue		7	14	21	28	
Wed	1	8	15	22	29	
Thu	2	9	16	23	30	
Fri	3	10	17	24	31	
Sat	4	11	18	25		
Sun	5	12	19	26		

August 2020						
Mon		3	10	17	24	31
Tue		4	11	18	25	
Wed		5	12	19	26	
Thu		6	13	20	27	
Fri		7	14	21	28	
Sat	1	8	15	22	29	
Sun	2	9	16	23	30	

2x MAT Inset days to be added